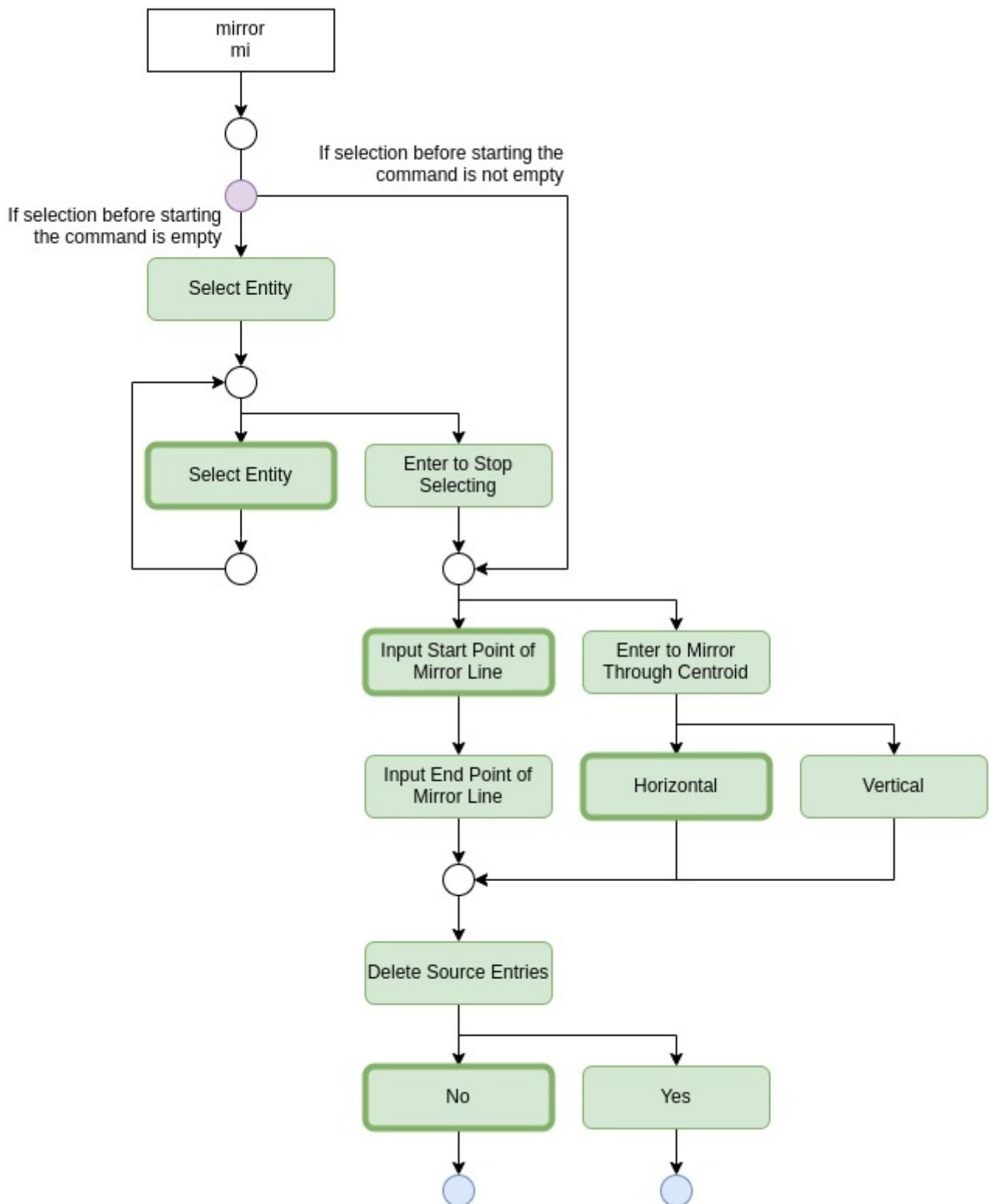


Mirror

Flowchart



Legend

<div style="border: 1px solid black; padding: 2px; display: inline-block;">Command</div>	<div style="border: 1px solid black; border-radius: 50%; padding: 2px; display: inline-block;">Stage</div>	<div style="display: inline-block; width: 15px; height: 15px; background-color: #ccc; border-radius: 50%;"></div>	<div style="display: inline-block; width: 15px; height: 15px; background-color: #add8e6; border-radius: 50%;"></div>	<div style="background-color: #c8e6c9; padding: 2px; display: inline-block;">Option</div>	<div style="background-color: #ffcdd2; padding: 2px; display: inline-block;">Option</div>	<div style="background-color: #e0e0e0; padding: 2px; display: inline-block;">Option</div>	<div style="background-color: #fff9c4; padding: 2px; display: inline-block;">Option</div>	<div style="background-color: #ffe0b2; padding: 2px; display: inline-block;">Option</div>	<div style="border: 2px solid black; padding: 2px; display: inline-block;">Option</div>	<div style="text-decoration: underline wavy; padding: 2px; display: inline-block;">Option</div>
Command name & its shortcut	Stage of Command	Condition Check	Entity Created	Option to continue the command	Option to end the command	Toggle option	Reverse Option	Settings Option	Default Option with thick border	Alphabet with underline is the shortcut for the option

From:
<https://dokuwiki.librecad.org/> - **Wiki**

Permanent link:
<https://dokuwiki.librecad.org/doku.php/dev:generic:toolcharts:mirror?rev=1591969075>

Last update: **2020/06/12 13:37**

