

# Rotate

## Flowchart

Chart1

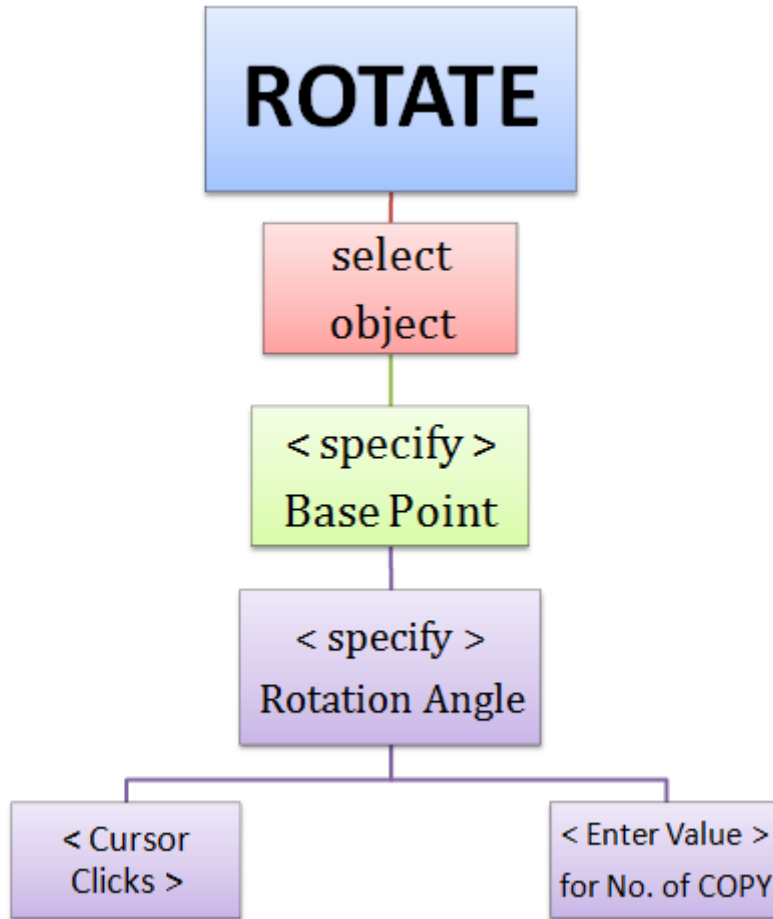
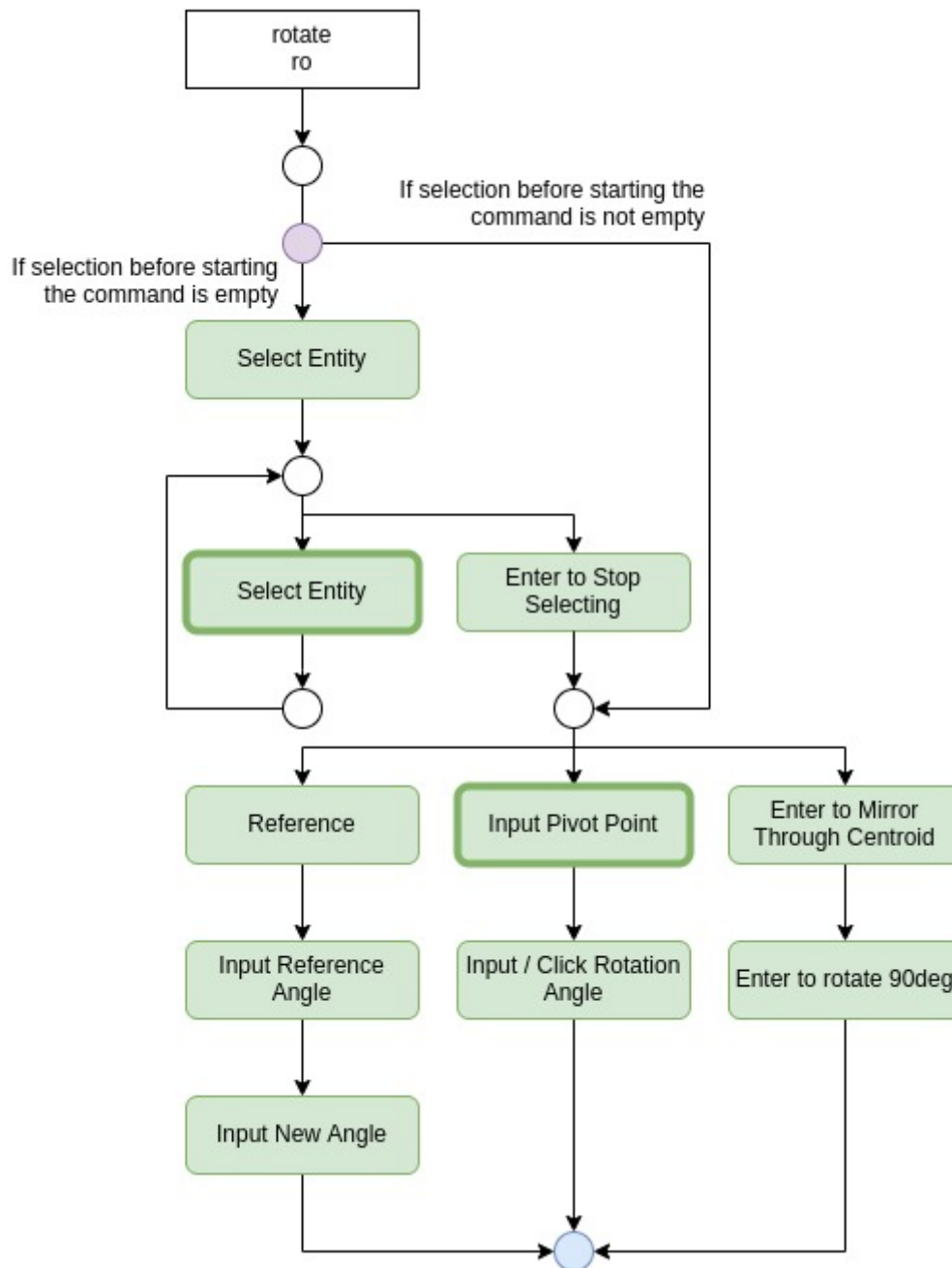


Chart2



### Legend

Command	Stage of Command	Condition Check	Entity Created	Option	Option	Option	Option	Option	Option	Option
Command name & its shortcut	Stage of Command	Condition Check	Entity Created	Option to continue the command	Option to end the command	Toggle option	Reverse Option	Settings Option	Default Option with thick border	Alphabet with underline is the shortcut for the option

From:  
<https://dokuwiki.librecad.org/> - Wiki

Permanent link:  
<https://dokuwiki.librecad.org/doku.php/dev:generic:toolcharts:rotate?rev=1591980380>

Last update: 2020/06/12 16:46

